

PICK YOUR PATH. BEAT THE GAME. BE THE HERO.

# ESCAPE

FROM A

# VIDEO GAME

THE ENDGAME



DUSTIN BRADY

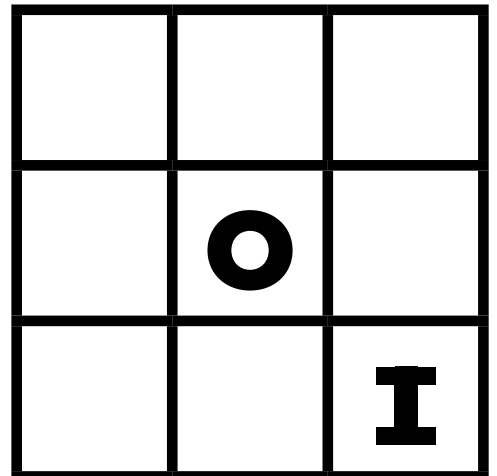
***The Endgame worksheet.***

**Follow along!**



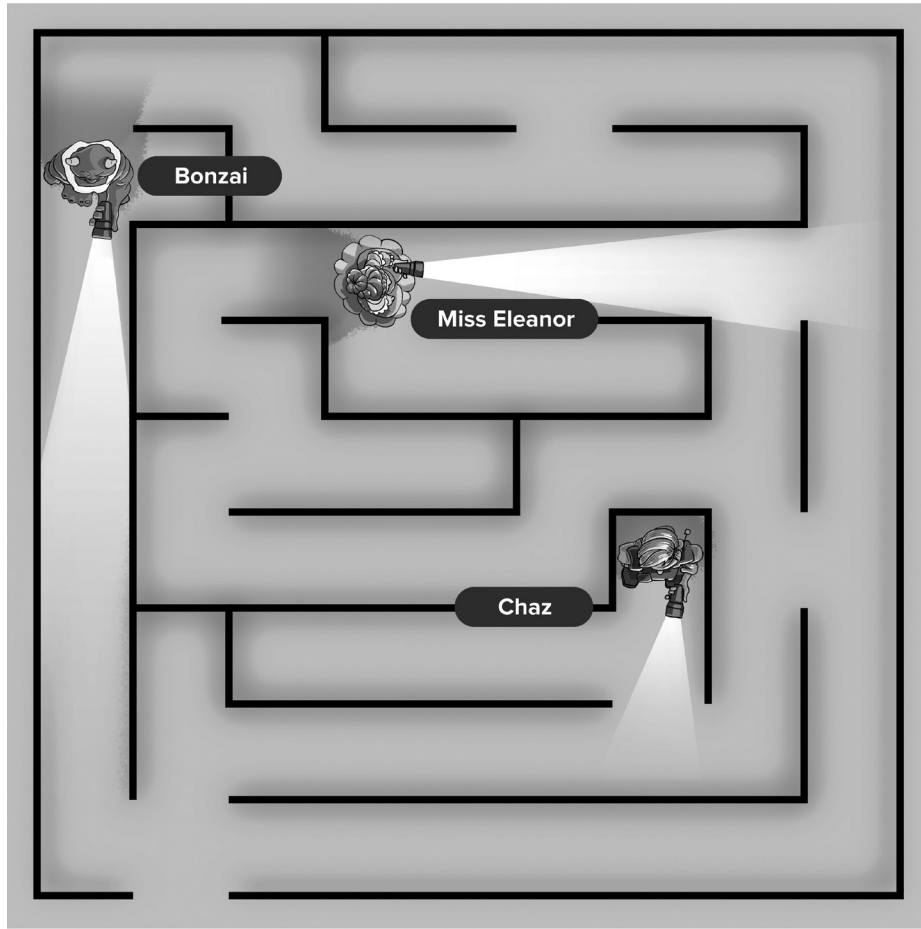
## SELECT

- 141** Creepy Country.
- 20** Museum of Villainous Excellence.
- 88** Chaos City.
- 124** Azkaar Asylum.
- 92** ???
- 49** Boom-Boom's Adventure Zone.
- 137** Grim Energy.

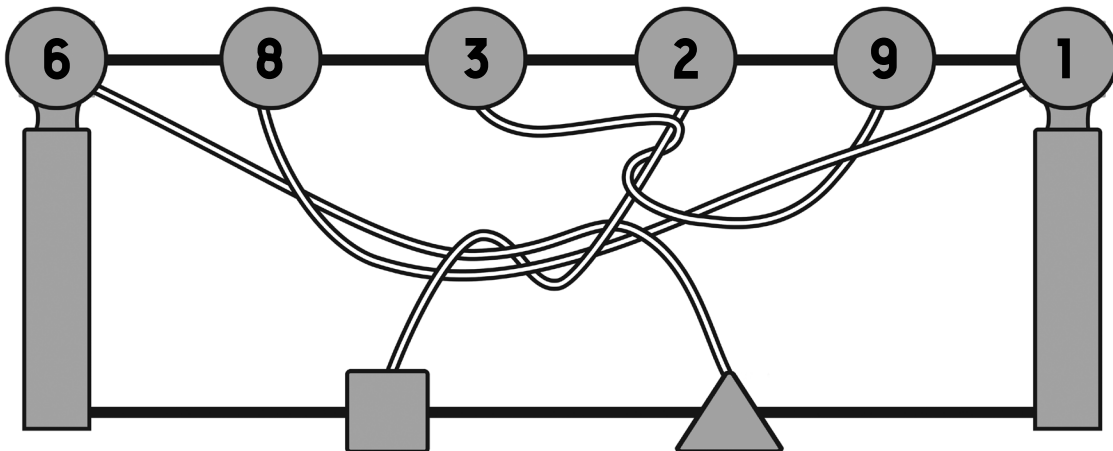


COMPLETE THE GRID. FIND ITS MATCH.  
DEFEAT THE BUILDER.

FROM PAGE 27

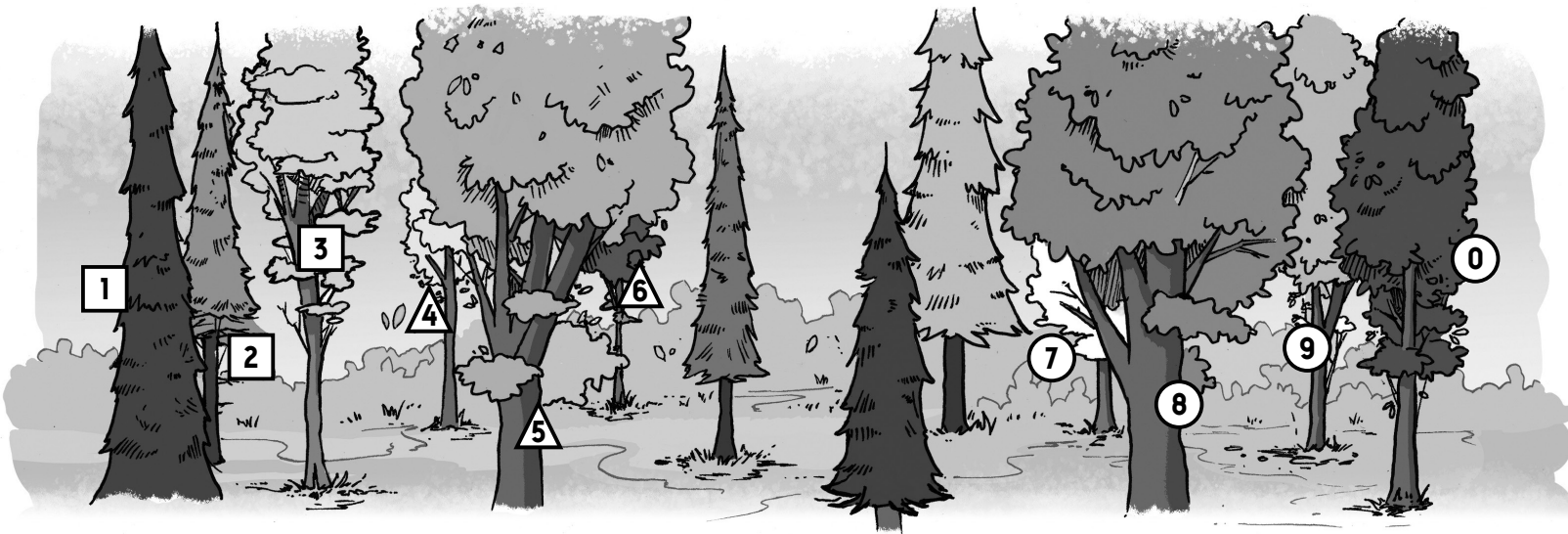
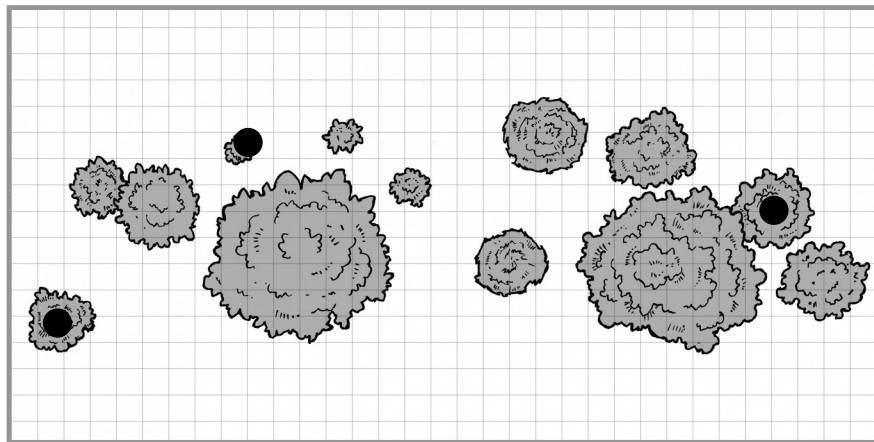


FROM PAGE 50



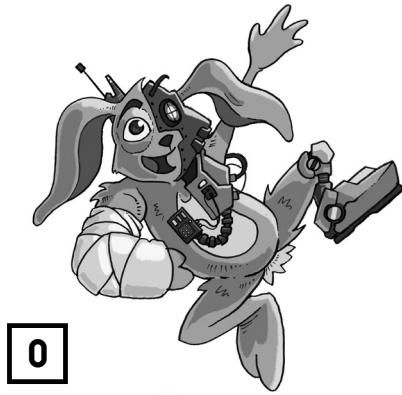
**TURN TO**

P. — —  
□ ▲



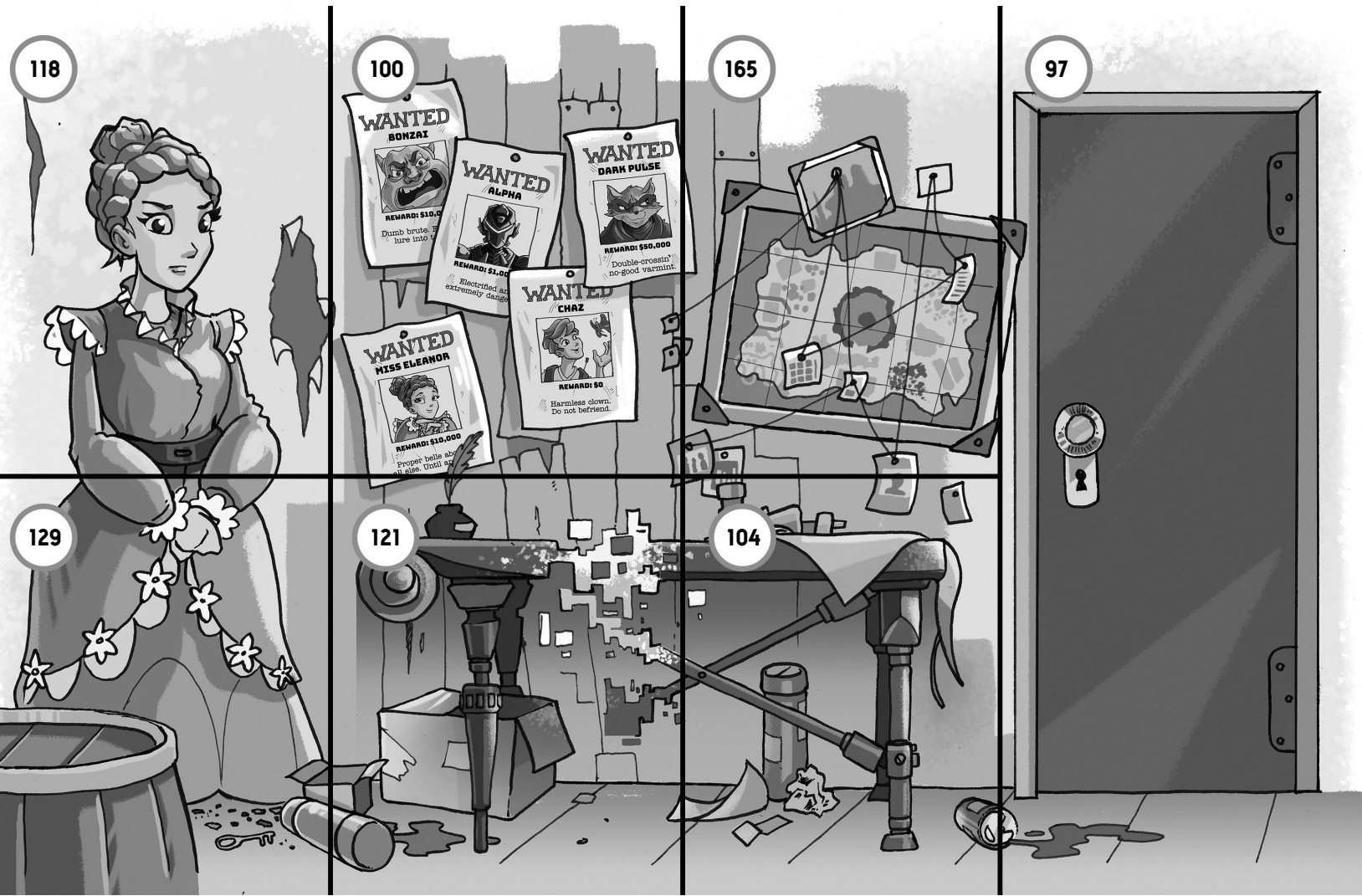
**TURN TO** P.



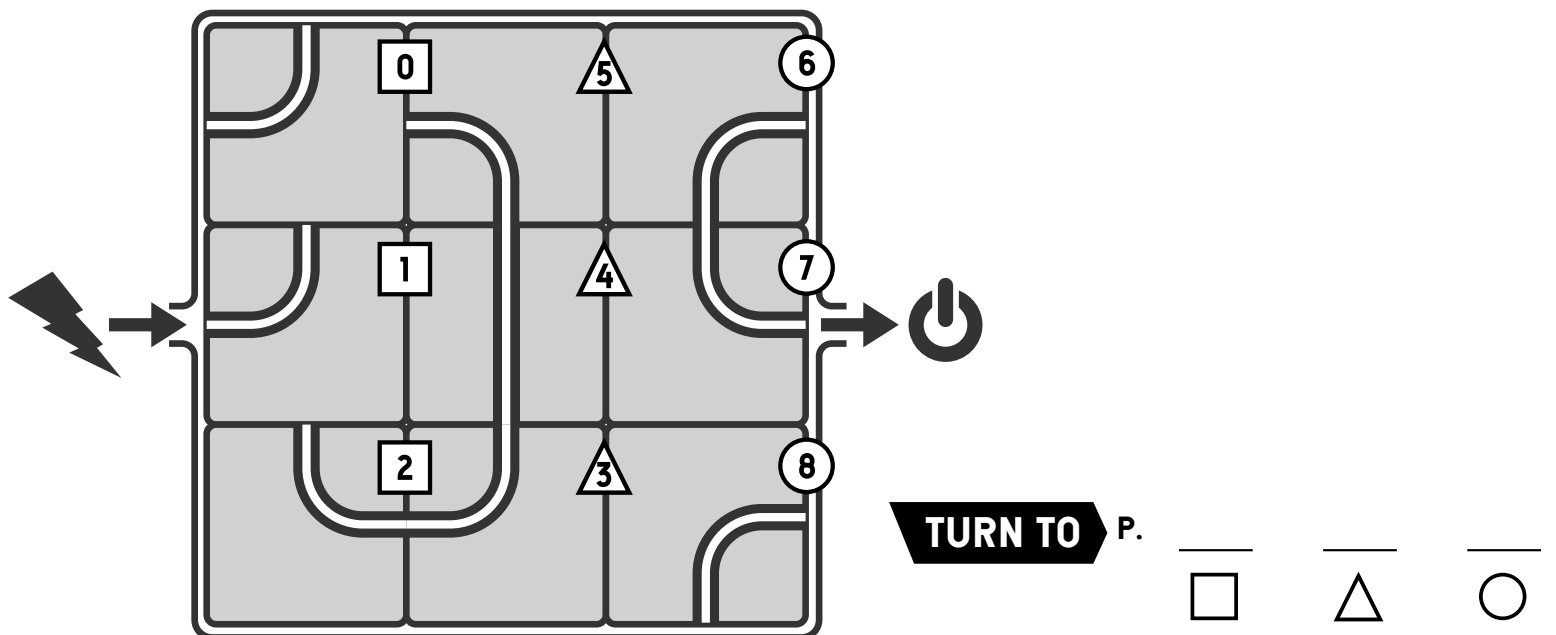


**TURN TO** P.

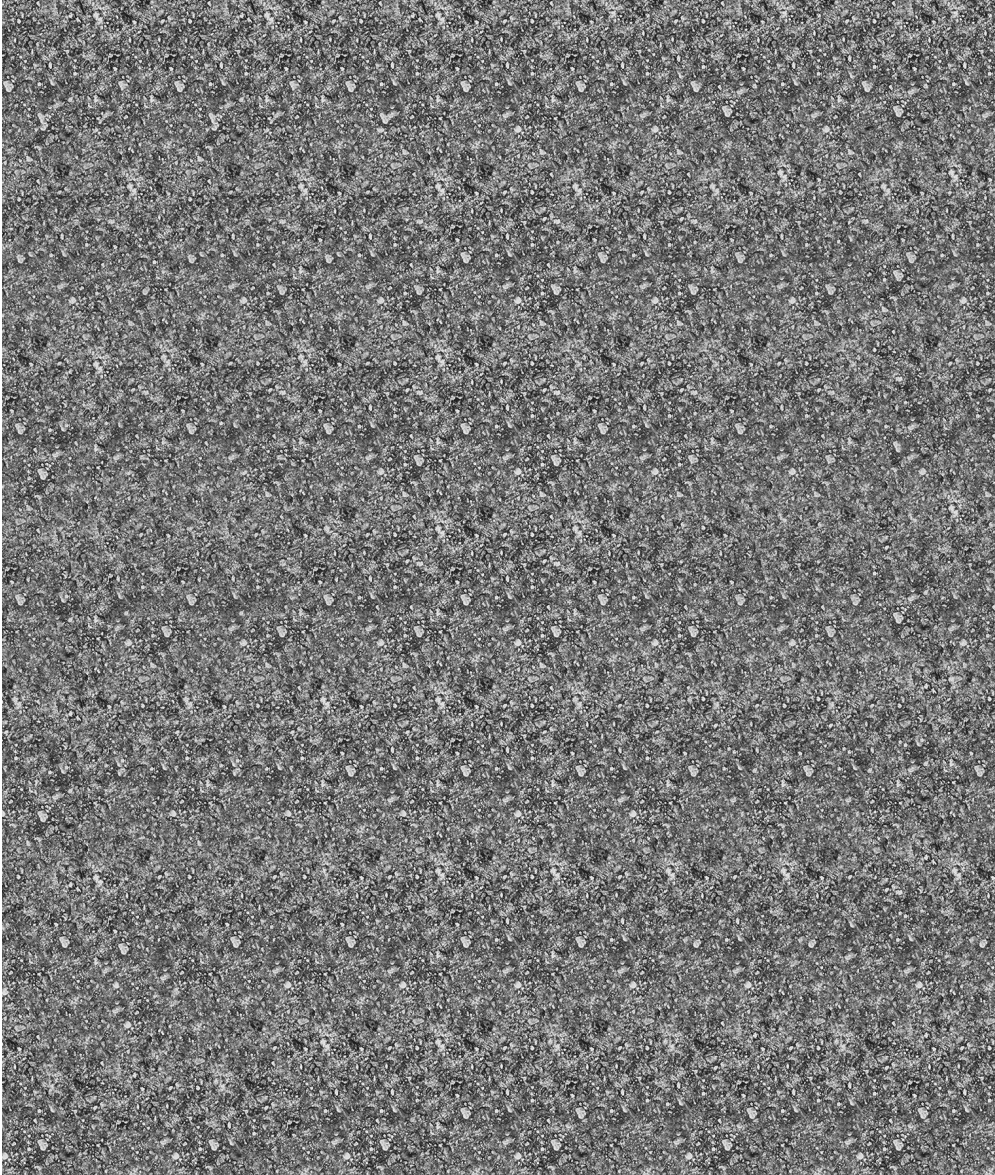
FROM PAGE 94



FROM PAGE 143



FROM PAGE 177



# Secret Message

Fill in the secret letter that goes with each achievement. When you enter all the letters, you'll spell a phrase. Enter that phrase at [escapefromavideogame.com](http://escapefromavideogame.com) to unlock a secret story.

\_\_\_ SPONGEBOB SQUAREBALL

\_\_\_ THE TROLLEY PROBLEM

\_\_\_ THE GHOST

\_\_\_ NEVER TRUST A BOMB

\_\_\_ HORSEFLIES ON A HOUND

\_\_\_ NO-GOOD VARMINTS

\_\_\_ GALAXY BRAIN

\_\_\_ NATURE'S FIRST VILLAIN

\_\_\_ 818

\_\_\_ CAN'T DODGE A TROLLEY

\_\_\_ NOT FOR LONG

\_\_\_ BEEFY BRAWLERS

\_\_\_ WOULDN'T DREAM OF IT

\_\_\_ NEW TEAM

\_\_\_ AGREE TO DISAGREE

\_\_\_ RIP ALPHA

\_\_\_ CLASSIC BAD GUY CHUCKLE

\_\_\_ KONAMI CODE

\_\_\_ "FUN" HOUSE

\_\_\_ WAFFLE HOUSE

\_\_\_ COOL HOBBY, BRO

\_\_\_ BULL IN A BOX

\_\_\_ WHAT A MESS

\_\_\_ WORSE THAN THE ELECTRIC CHAIR

\_\_\_ COLLECTIBLES

\_\_\_ SUPER STINKER

\_\_\_ WORLD-CLASS CLINGERS

\_\_\_ LOLLYGAGGING

\_\_\_ CROAK

\_\_\_ GARBAGE MONSTER

VISIT [ESCAPEFROMAVIDEOGAME.COM](http://ESCAPEFROMAVIDEOGAME.COM)  
TO UNLOCK YOUR ADVENTURE.